



STEEL HOARDING IN GROUND INSTALLATION GUIDE

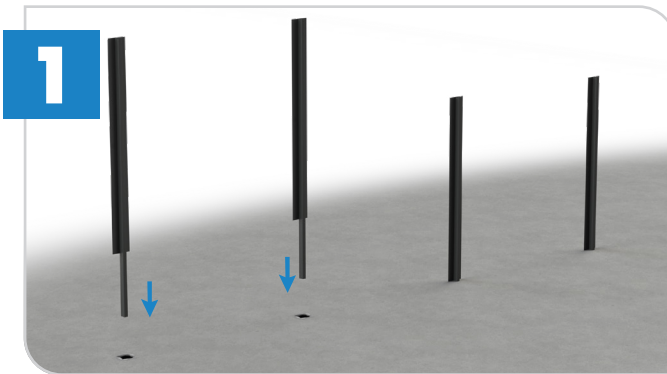
This type of hoarding system involves burying a portion of the steel posts into the ground to provide additional stability and security. The buried section of the hoarding acts as an anchor, preventing unauthorized access or attempted infringement.

People to Install:



Equipment / Accessories Needed:

- Spanner
- Steel Posts
- Steel Panels
- Digging Equipment



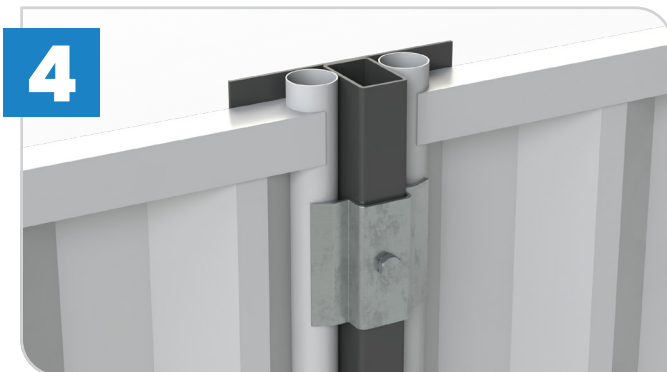
1 First, ensure the 2m or 2.4m posts are dug firmly in the ground, in the correct position ready for attachment.



2 Ensure they are evenly spaced out and you have as many as required. Next, attach the hoarding panels to the posts.



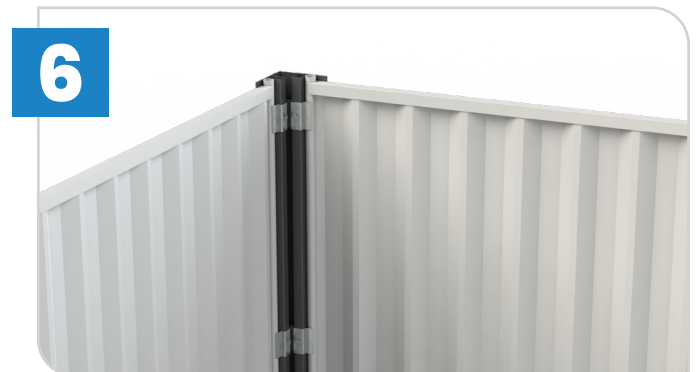
3 Do this by lifting the fence panels into position and attaching them to the posts using the bolt and clip system.



4 To attach the steel panels to the posts, clip into place. There are three clips per post so ensure they are all attached.



5 Repeat step 4 as many times as needed.



6 Corners and pedestrian gates are installed in the same manner and creates a seamless fence line.



Useful Tip: Additional gates can be provided with this product.



Wear the appropriate PPE for this task.